

# MIXED RECYCLING

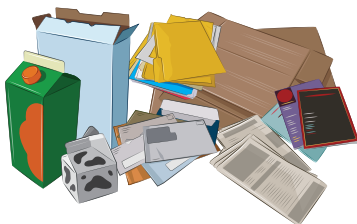


Adam J. Bello  
County Executive

✓ **EMPTY**    ✓ **CLEAN**    ✓ **UNBAGGED**

## PAPER

- Newspapers and inserts
- Magazines and catalogs
- Softcover books
- Junk mail & office paper
- Gable-top cartons
- Pizza boxes
- Cardboard  
(flatten not to exceed 2x4 ft.)
- Paper food boxes: cereal, cracker, pasta, etc. (flatten)
- Shredded paper in paper bag only



## METAL & GLASS

- Metal cookware & foil-ware
- Metal food & beverage cans
- Glass bottles & jars
- Empty aerosol cans
- No window, mirror, baking glass



## PLASTIC

- Bottles (beverage, soap, squeeze & spray)
- Jugs (milk, detergent)
- Jars
- Tubs (dairy products)
- Reattach caps, lids & spray pumps
- No foam (egg cartons, etc.)
- No Rx bottles\*
- No straws or utensils
- No bags\*
- No coffee pods
- No drink cups



## KEEP OUT

- Cords / Metal Chains \*
- Rechargeable Batteries \*
- Electronics \*
- Sharps / Syringes \*
- Plastic Bags / Film \*
- Plastic Clamshells / Takeout Containers
- Clothing \*
- Propane Tanks \*
- Food / Liquid Waste
- Ropes / Hoses
- Tarps / Pool Covers



\*Find out more at:  
[www.monroecounty.gov/ecopark](http://www.monroecounty.gov/ecopark)

# FREQUENTLY ASKED QUESTIONS

**Q | Can I recycle all plastics marked #1- #7?**

**A | The recycling symbol that includes a number does NOT necessarily indicate recyclability curbside.** Recycle plastics by their shape - empty bottles, jugs, jars and tubs. For more information visit: [www.monroecounty.gov/recycling](http://www.monroecounty.gov/recycling)

**Q | Should I separate my recyclables using plastic bags?**

**A | NO, Keep recyclables unbagged and loose in container.** Plastic bags, cords, ropes, etc. wrap around recycling machinery causing facility downtime and also contaminate recyclable paper. Plastic bags and product wrapping may be recycled at most large retail outlets.

**Q | Can I recycle caps and lids from containers?**

**A | Yes. After rinsing, caps and lids should be reattached.**

**Q | Can Styrofoam™ egg cartons, coffee cups, and packing material with a #4 or #6 on it be recycled?**

**A | Foam cannot be placed in recycling bins.** The ecopark will accept clean, white, block packaging foam only. Visit [www.monroecounty.gov/ecopark](http://www.monroecounty.gov/ecopark) for more information.

**Q | Can I place small electronics in my recycling bin or TVs and the like at the curb?**

**A | Electronics are not accepted curbside.** Visit [www.monroecounty.gov/ecopark](http://www.monroecounty.gov/ecopark) for more information. Large metal appliances can be recycled by calling your waste provider.



**Q | Can pizza boxes be recycled?**

**A | Yes, clean pizza boxes can be recycled.** If the bottom of the box is covered in grease and food, tear off, dispose and only recycle the clean lid.

**Q | Should I place my recyclables at the curb on very windy days or if a storm is forecast?**

**A | Recyclables that blow around the neighborhood are litter.** Use your good judgement on whether to delay your recycling.

**Q | Where can I get a new/replacement recycling container?**

**A | Contact your waste collection provider.** Containers may be purchased at home improvement stores but always check with your recycling collector first to ensure program compatibility.

## MORE QUESTIONS?

**Call your waste collection provider  
or email [mcdes@monroecounty.gov](mailto:mcdes@monroecounty.gov)**

**[www.monroecounty.gov/recycling](http://www.monroecounty.gov/recycling)**



Printed on recycled paper



@monroecounty.gov/ecopark